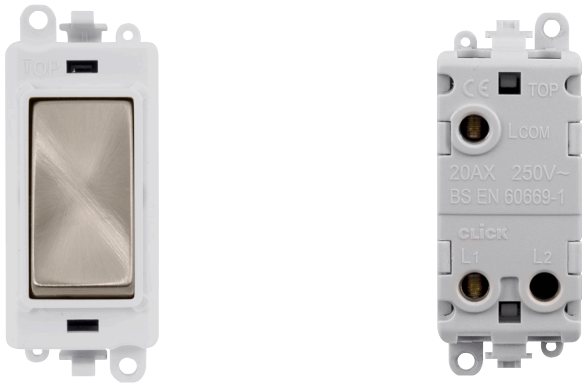


Technical Specification

Product Code: GM2001PWBS Description: 20AX 1 Way Switch Module



General Information

Dimensions	24.5mm (W) x 50mm (H) x 22.5mm (D)
Aperture Dimensions	20mm (W) x 35mm (H)
Module Frame Finish	Polar White
Switch Finish	Brushed Stainless
Materials	Body & Insert: Nylon Switch: Urea Switch Cover: Stainless Steel Terminals: Brass Terminal Screws: Steel & Yellow Passivated Contacts: Silver “on-lay” Copper / Brass
Maximum Voltage	250V 50Hz
Load Rating	20AX (Suitable For Inductive Loads)
Terminal Size	5mmø
Termination Type	Screw
Terminal Torque	1.2Nm
Terminal Capacity	3 x 2.5mm ² or 1 x 4mm ²
Back Box Depth	Dependent On Plate Used
Operational Temperature	-5°C to +40°C
Warranty	10 Years
Standards	BS EN 60669-1: 2018
Additional Information	Ensure that the mains supply is isolated before commencing installation and refer to the circuit diagram with the relevant product. Bare earth cables must always be covered with appropriate sleeving and wired to the earth terminal.

UK Design Registration: 3015621